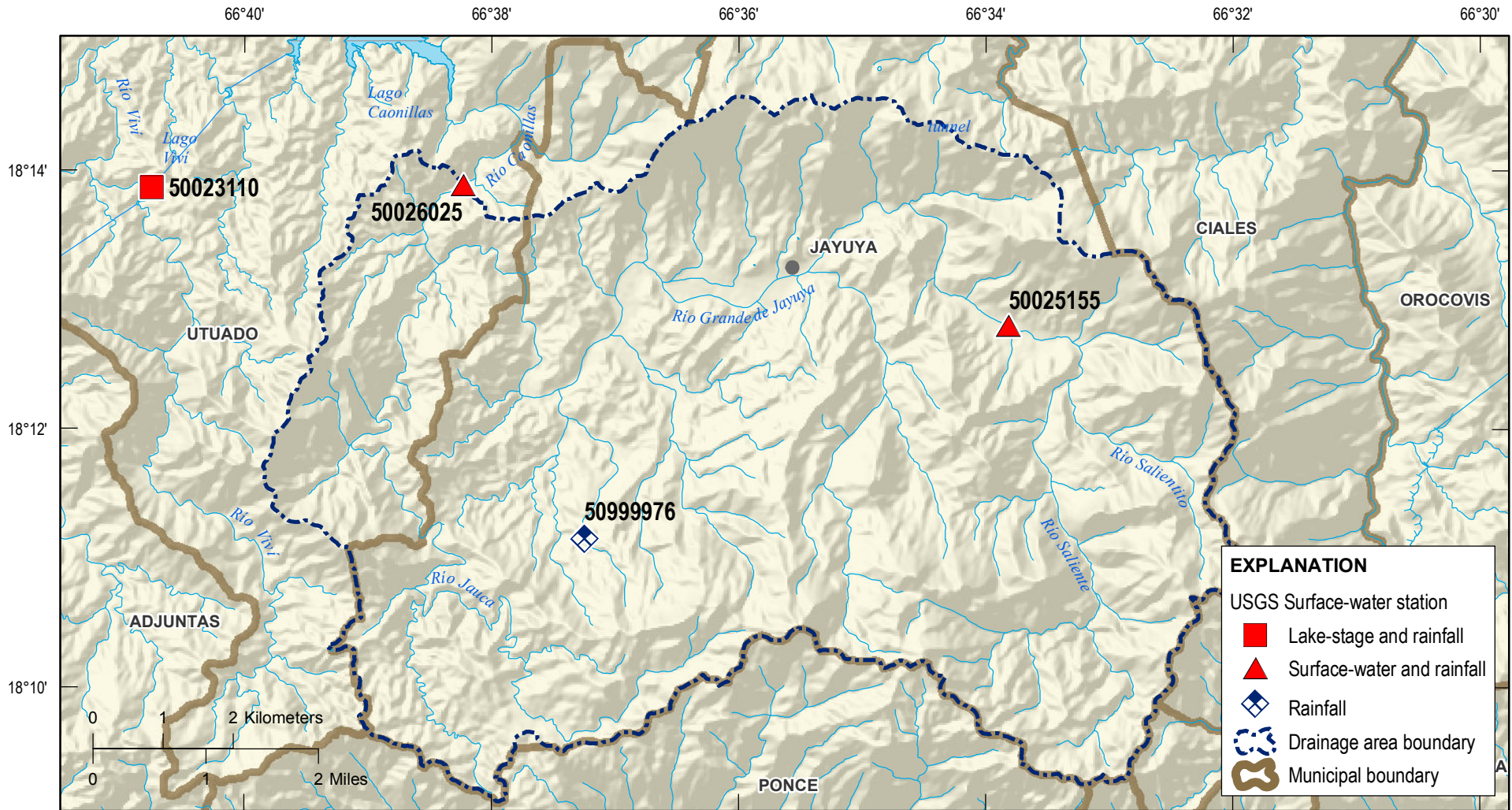
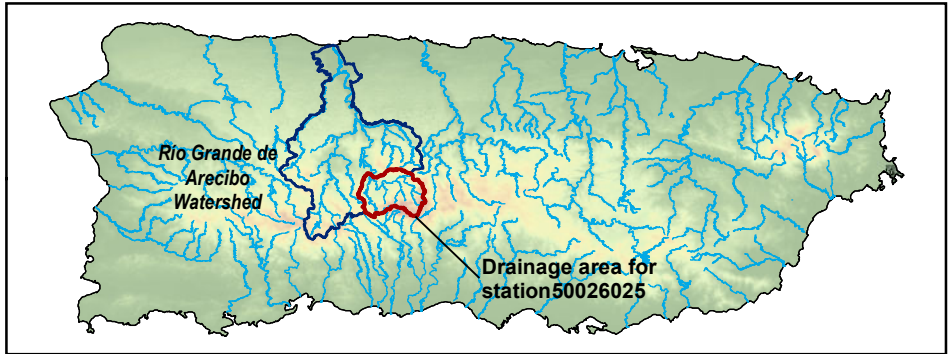


50026025 - RIO CAONILLAS AT PASO PALMA, PR
Drainage area of 37.9 square miles



EXPLANATION

- USGS Surface-water station
- Lake-stage and rainfall
- ▲ Surface-water and rainfall
- ◆ Rainfall
- - - Drainage area boundary
- Municipal boundary

Base from USGS digital data
 Lambert conformal conic projection, Puerto Rico Datum
 Map prepared by the US Geological Survey

Provisional subject to revision